

Evaluating the applicability of a low-cost sensor for measuring PM_{2.5} concentration in Ho Chi Minh city, Viet Nam

Nguyen Doan Thien Chi*, To Thi Hien



Use your smartphone to scan this QR code and download this article

ABSTRACT

Introduction: Continuous monitoring provides real-time data which is helpful for measuring air quality; however, these systems are often very expensive, especially for developing countries such as Vietnam. The use of low-cost sensors for monitoring air pollution is a new approach in Vietnam and this study assesses the utility of low-cost, light-scattering-based, particulate sensors for measuring PM_{2.5} concentrations in Ho Chi Minh City. **Methods:** The low-cost sensors were compared with both a Beta attenuation monitor (BAM) reference method and a gravimetric method during the rainy season period of October to December 2018. **Results:** The results showed that there was a very strong correlation between two low-cost sensors ($R = 0.97$, slope = 1.0), and that the sensor precision varied from 0 to 21.4% with a mean of 3.1%. Both one-minute averaged data and one-hour averaged data showed similar correlations between sensors and BAM ($R^2 = 0.62$ and 0.69, respectively), while 24-hour averaged data showed excellent agreement ($R^2 = 0.95$, slope = 1.05). In addition, we also found a strong correlation between those instruments and a gravimetric method using 24-hour averaged data. A linear regression was used to calibrate the 24-hour averaged sensor data and, once calibrated, the bias dropped to zero. **Conclusion:** These results show that low-cost sensors can be used for daily measurements of PM_{2.5} concentrations in Ho Chi Minh City. The effect of air conditions, such as temperature and humidity, should be conducted. Moreover, technical methods to improve time resolution of low-cost sensors need to be developed and applied in order to provide real-time measurements at an inexpensive cost.

Key words: Low-cost sensor, particulate, PM_{2.5}, Ho Chi Minh City

INTRODUCTION

Particulate matter is one of the most important components of air pollution. The particulate matter is emitted from various sources which may affect the size and composition of the particles. Particulate matter whose aerodynamic diameter is 2.5 μm or below is known as PM_{2.5}. The smaller the particles are, the easier it is for them to penetrate the respiratory system and for PM_{2.5} to enter into human blood¹. In addition, the composition of particles is also an important factor that directly affects human health. PM_{2.5} affects not only human health but also has an impact on the global climate. There are a variety of methods used for determining the concentration of particles in the atmosphere. Both gravimetric and continuous methods^{2,3} such as impactors (gravimetric method), tapered element oscillating microbalances and beta attenuation monitors are widely used, while instruments such as the DustTrak and SidePak use light scattering to obtain particle mass concentrations. These methods are often time-consuming or expensive, especially for continuous monitoring devices.

Around the world the application of low-cost sensors in monitoring air pollutants has received a great deal of attention in recent years with one of the first studies of small, low-cost sensors being recently described⁴. Based on the report from the World Meteorological Organization, simple, low-cost single pollutant sensors are available for below \$50 USD. High-cost sensors have not been clearly defined however, more sophisticated multi-parameter, fully autonomous sensor systems with hardware cost more than ~ \$10,000 USD⁵. Low-cost dust sensors based on light scattering have been developed⁶, and usually consist of an infrared emitting diode and a phototransistor. Air particles pass through the sensor, scatter light, and the detector measures the intensity of the scattered light which is related to the mass concentrations of particles⁷. There has been an increasing focus on calibrating the performance of low-cost sensors to account for the effects of particle size, composition, atmospheric temperature and humidity, etc, against established reference methods^{7,8}. Low-cost sensors have some important limitations, such as stability and cross-sensitivity. There is much to be gained by comparing the performance of

Faculty of Environment,
VNUHCM-University of Science

Correspondence

Nguyen Doan Thien Chi, Faculty of Environment, VNUHCM-University of Science

Email: ndtchi@hcmus.edu.vn

History

- Received: 2019-06-18
- Accepted: 2019-09-09
- Published: 2019-09-30

DOI :

<https://doi.org/10.32508/stdj.v22i3.1688>



Copyright

© VNU-HCM Press. This is an open-access article distributed under the terms of the Creative Commons Attribution 4.0 International license.



Cite this article : Thien Chi N D, Hien T T. Evaluating the applicability of a low-cost sensor for measuring PM_{2.5} concentration in Ho Chi Minh city, Viet Nam. *Sci. Tech. Dev. J.*; 22(3):343-347.

low-cost sensors against reference devices and methods under a range of environmental conditions.

There is no national monitoring network for $PM_{2.5}$ concentrations in Vietnam and measurement data are still rare. The few previous studies of the levels of $PM_{2.5}$ in Vietnam found very high concentration that greatly exceed the Vietnam National Technical Regulation on Ambient Air Quality or World Health Organization ambient air quality standards^{9,10}.

Ho Chi Minh City is a populous city and one of the economic hubs of Vietnam. Besides economic activities, environmental protection has increasingly become an important issue. As such there is a clear need for monitoring in Ho Chi Minh City. Unfortunately, since 2010 automatic monitoring stations belonging to the Ho Chi Minh City Air Quality Monitoring Network have not been able to operate. Therefore, data of air quality, especially particulate matter (PM), are lacking.

The application of low-cost sensors to measure air quality is a new approach in Vietnam. There has been one previous study in Hanoi using a Panasonic $PM_{2.5}$ sensor⁹, while there have not been any papers on the application of low-cost sensors in air quality assessment in Ho Chi Minh City. Therefore, in this study, we compare a Plantower Laser $PM_{2.5}$ dust sensor PMS 3003 against reference methods, with the aim of assessing the applicability of low-cost sensors for measuring $PM_{2.5}$.

METHODS AND MATERIALS

Setting up $PM_{2.5}$ sensor

The Plantower Laser $PM_{2.5}$ dust sensor PMS 3003 is a low-cost (~ \$15 USD) commercially-available laser particle sensor. This sensor is used for measuring $PM_{2.5}$ in a network of low-cost devices from Location Aware Sensing Systems. The sensor effective measurement range is between 0 and $500 \mu\text{g}/\text{m}^3$, with a resolution of $1 \mu\text{g}/\text{m}^3$. The working conditions (temperature and relative humidity) of the sensors are -10 to 60°C and 0 to 99%, characteristics which are suitable for measuring the $PM_{2.5}$ in ambient air in Ho Chi Minh City. A Plantower Laser $PM_{2.5}$ dust sensor and a LinkIt ONE board were combined to become a low-cost sensor (<100\$), as illustrated in **Figure 1a**. The data from two of these low-cost sensors were compared against those obtained with a reference method, using a FH 62 C14 beta attenuation monitor (BAM) (Thermo Scientific, USA). The BAM was situated in the air monitoring station of the Faculty of Environment, VNU-HCM University of Science, located on the rooftop of a 11-storey building. The BAM is calibrated twice per year by mass foils. The two sensors

and the BAM were located physically close to each other so that the two devices could measure the same air (**Figure 1 b**).



Figure 1: A combination of a Plantower Laser $PM_{2.5}$ dust sensor PMS3003 and a LinkIt ONE board as a sensor system (a); location of sensor and BAM (b).

Collecting data

The instruments were run for three months from October 2018 to December 2018, and one-minute sensor readings were averaged over one-hour and 24-hour periods, for comparison with BAM and gravimetric data (obtained with an SKC Inc Impactor at 10 L/min over 24 hours on quartz fiber filters). Initially the two low-cost sensors were tested over two days to compare their responses to atmospheric $PM_{2.5}$ concentrations. Subsequently, data from the sensors and BAM were collected at the same time and same location, with a 1-week period of coincident impactor measurements.

Calibrating the low-cost sensor

The laboratory calibration method was provided by the EPA 2014 Air Sensor Guidebook¹¹. We compared the response of the low-cost sensor with data from the reference device. Then, we created a calibration curve that relates the responses of the low-cost sensor to the reference instrument using a mathematical equation. We used a set of one month of sensor data for plotting a calibration curve and then applied the mathematical equation to the data from the following month. Finally, bias was calculated to assess the performance of low-cost sensor.

RESULTS

To obtain the intra-sensor correlation, a scatter plot of one-minute data from two days of sensor measurements was created, as illustrated in **Figure 2**. It shows a very good correlation between the two low-cost sensors ($R^2 = 0.95$, slope = 1).

The sensor data were compared to those of the BAM using one-minute data, one-hour averages, and 24-hour averages. The one-minute sensor and BAM data show a correlation of $R^2=0.62$ and a slope = 0.75, with

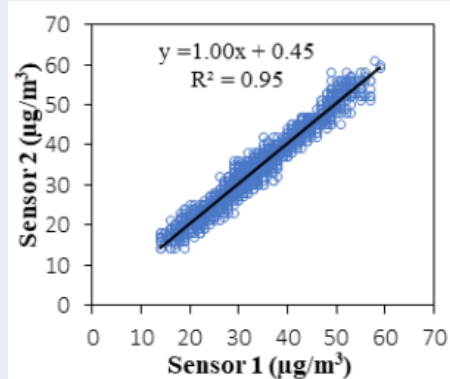


Figure 2: Scatter plot between the two sensors (n=2634).

the correlation of one-hour averages being slightly better ($R^2 = 0.69$). However, a strong correlation between the 24-hour averages of the two instruments was found ($R^2 = 0.96$, slope = 0.88). Figure 3 illustrates the variation of one-minute data and 24-hour averaged data of the low-cost sensor and BAM over the measurement period.

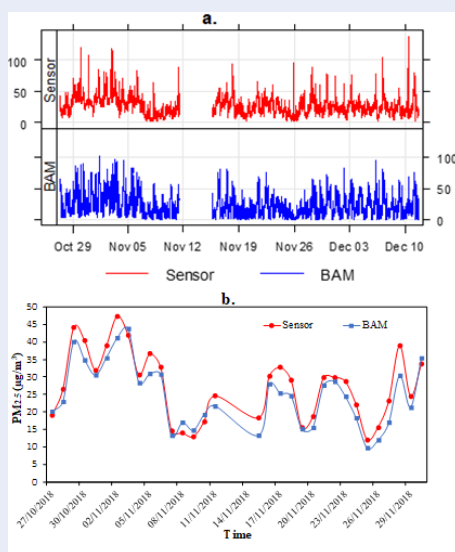


Figure 3: Variation of minute data (a) and 24-hour averaged data (b) of the low-cost sensor (red line) and BAM (blue line).

DISCUSSION

The response of two low-cost sensors to PM_{2.5}

As shown in Figure 2, there was a very good correlation between the two low-cost sensors ($R^2 = 0.95$, slope = 1) which is in agreement with the study by Sayahi, which also found high agreement between the same type of low-cost sensors¹². A statistical t-test was used to determine if there are any significant differences between the two measurements, and the results are shown in Table 1. The means of the two sensors were 33.86 and 34.16 $\mu\text{g}/\text{m}^3$, with variance of 69.46 and 72.40, respectively ($n = 2634$). The t stat value was smaller than the t critical, showing that there was no difference between the two sensors. Sensor precision was calculated via the coefficient of variation (CV) of the raw outputs: $CV = Cs/Cm$ (where CV is the precision, Cs is the standard deviation of the measurements, and Cm is the measurement mean), and with acceptable CV values being smaller than 10%⁷. The CV was calculated for each minute for the two sensors and varied from 0 to 21.4%, with a mean of 3.1% (with the third quartile of CV being less than 5%). These results suggest that the two low-cost sensors can be treated similarly when monitoring PM_{2.5} concentrations.

Table 1: The t-test result of the two sensors

t-Test: Two-Sample Assuming Unequal Variances		
	Sensor 1	Sensor 2
Mean	33.86	34.16
Variance	69.46	72.40
Observations	2634	2634
Hypothesized Mean Difference	0	
t Stat	-1.28	
P(T<=t) two-tail	0.20	
t Critical two-tail	1.96	

Comparison of sensor to BAM

The one-minute data from the sensors showed very similar variations of PM_{2.5} to those measured by the BAM. However, there were many spikes in the sensor data (Figure 3 a) which were not evident in the BAM record. Although the 24-hour averaged data of the sensors give very similar results to the BAM,

the spikes in the 24-hour averaged data were higher than those of the BAM. The study of similar sensors in Hanoi showed a higher correlation of hourly data between a Panasonic sensor and a BAM (3.1 km away from Panasonic sensor), with $R^2 = 0.85$ and slope of 0.99⁹. The Panasonic and Plantower sensors are both low-cost sensors which are based on the light scattering principle. However, there are no studies comparing these sensors against each other.

To compare sensor data to the true value of $PM_{2.5}$ obtained from BAM, bias calculations can be performed. Bias is a fixed value that is added or subtracted from the true value due to the response of the sensor¹¹. A bias calculation is as follows: $B = \frac{C}{C_R} - 1$, where B is the bias, C is the average of the sensor, and C_R is the true concentration of the pollutant. Zero bias is ideal, but bias values lower than 0.1 can be acceptable. The bias calculated for one-minute, one-hour and 24-hour averaged data were 0.66, 0.43 and 0.11, respectively. The bias of the one-minute data was large; however, the bias of the 24-hour averaged data was acceptable. Over a seven-day period, both the sensor and BAM data were compared against a gravimetric method and both showed high correlations with the impactor data ($R^2 = 0.95$ for sensor and $R^2 = 0.99$ for BAM, ($n = 7$)). The 24-hour averages of the sensor, BAM and filters were 34.6 ± 10.5 , 31.9 ± 9.9 , and $30.9 \pm 10.6 \mu g/m^3$, respectively.

Calibration of low-cost sensor

Calibrations of the sensor measurements were performed using 24-hour averaged data from the low-cost sensor because these data gave the highest correlation with the BAM. A calibration curve that relates sensor to BAM data was created by linear regression resulting in the equation $Y = 0.74X + 4.41$, where Y is the calibrated value and X is the measured sensor value. Calibrated 24-hour averages of $PM_{2.5}$ are shown in **Figure 4**.

After the calibration, the sensor data were much closer to the true value of $PM_{2.5}$, with the bias decreasing from 0.11 to 0.01. To test the calibration, the linear equation was applied to 10 more days of sensor data. The mean of the 24-hour averaged data of the sensor, BAM, and sensor were 27.0 ± 6.0 , 24.8 ± 4.9 , and 24.3 ± 4.5 , respectively. The bias also decreased from 0.08 to -0.01. These results suggest that a linear relationship can be used for calibrating 24-hour averaged data obtained from the Plantower Laser $PM_{2.5}$ dust sensor. For comparison with other studies, as **Table 2** shows, this sensor and reference method can be used, along with other low-cost sensor and reference methods.

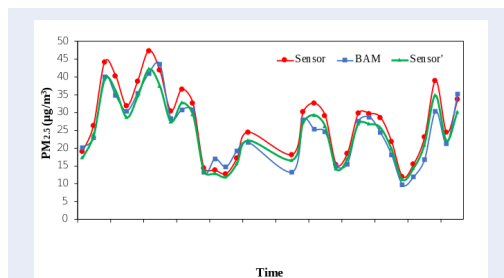


Figure 4: Variation of 24-hour averaged data of the low-cost sensor (red), BAM (blue) and calibrated sensor (sensor') shown in green.

The Plantower sensors give the highest correlation coefficient when comparing 24-hour measurements to the reference method. However, it is not good for measuring higher time resolutions, such as hourly and minute data. The Panasonic and DC1700 could effectively compare hourly and minute data; however, the DC1700 (~ \$400 USD) has a much higher cost than the Panasonic or Plantower sensors (~ \$15 USD). The DC1700 is a completed sensor system that can measure PM in air without any further buildup.

CONCLUSION

This study focused on evaluating the applicability of low-cost sensors for measuring $PM_{2.5}$ concentration in Ho Chi Minh City. The results showed that the Plantower sensor had a high intra-sensor correlation ($R^2 = 0.97$, slope = 1) and that during a three-month test under real conditions, it was found that 24-hour measurements of the sensor can be used for $PM_{2.5}$ monitoring in Ho Chi Minh City. After calibration, the bias was approximately zero and close to the true value of $PM_{2.5}$ concentrations in the air. In the future, research on the effects of temperature and humidity in each season in Ho Chi Minh City on the performance of low-cost sensors should be conducted. Moreover, the technical methods to improve time resolution of low-cost sensors need to be developed and applied so that they can provide real-time measurements at a relatively inexpensive cost.

LIST OF ABBREVIATIONS

- BAM:** beta attenuation monitor
- PM:** Particulate matter
- CV:** Coefficient of variation
- CPC:** Condensation particle counter
- SMPS:** Scanning Mobility Particle Sizer
- TEOM:** Tapered element oscillating microbalance

Table 2: Performance of different low-cost particles sensors

Sensor	Sampling time	Reference method	Coefficient (R ²)	Mathematical equation	Bias %	References
DC1700	minutely	CPC and SMPS	0.99	-	-1.1 to -9.1	7
Panasonic-PM _{2.5} sensor	hourly	BAM	0.73	Y = 1.4X	-	9
Plantower PMS 1003/5003	hourly	TEOM	0.18 - 0.32 (in spring)	Various models	-22.1 to -29.1	12
	24-h averaged		0.88 - 0.97		-	
Plantower PMS3003	24-h averaged	BAM	0.90	Y = 0.74X + 4.41	-0.01	This study

CPC: Condensation particle counter
SMPS: Scanning Mobility Particle Sizer
TEOM: Tapered element oscillating microbalance

AUTHORS' CONTRIBUTIONS

The author Nguyen Doan Thien Chi did the experiment and wrote the manuscript. The author To Thi Hien discussed the results and contributed to the final manuscript. All authors approved the final manuscript.

COMPETING INTERESTS

The authors declare that they have no competing interests.

ACKNOWLEDGMENTS

The authors are grateful to VNUHCM-University of Science for supporting to do this research under Grant No. T2018-28. The authors would like to thank Location Aware Sensor System (LASS) group and Shih-Chun Candice Lung, Sc.D. from Research Center for Environmental Changes, Academia Sinica, Taipei, Taiwan for providing the sensors. We would like to thank Dr Graham Mills from Centre for Ocean and Atmospheric Sciences School of Environmental Sciences, University of East Anglia, Norwich, UK for editing the manuscript.

REFERENCES

- Dockery DW, Pope CA, Xu X, Spengler JD, Ware JH, Fay ME, et al. An Association between Air Pollution and Mortality in Six U.S. Cities. *New England Journal of Medicine*. 1993;329:1753-1759.
- Stocker T, Qin D, Plattner G, Tignor M, Allen S, Boschung J, et al. *Climate Change 2013: The Physical Science Basis. Contribution of Working Group I to the Fifth Assessment Report of the Intergovernmental Panel on Climate Change*. IPCC; 2013.
- Hien PD, Bac VT, Tham HC, Nhan DD, Vinh LD. Influence of meteorological conditions on PM_{2.5} and PM_{2.5-10} concentrations during the monsoon season in Hanoi, Vietnam. *2002;36:3473-3484*.
- Holstius D, Pillarisetti A, Smith K, Seto E. Field Calibrations of a Low-Cost Aerosol sensors at a Regulatory Monitoring Site in California. *Atmospheric Measurement Techniques Discussions*. 2014;7:605-632.
- World Meteorological Organization. *Low-cost sensors for the measurement of atmospheric composition: overview of topic and future applications*; 2018.
- Sousan S, Koehler K, Thomas G, Park JH, Hillman M, Halterman A, et al. Inter-comparison of low-cost sensors for measuring the mass concentration of occupational aerosols. *Aerosol Science and Technology*. 2016;50:462-473.
- Chowdhury Z, Rufus DE, Johnson M, Shields KN, Allen T, Canuze E, et al. An inexpensive light-scattering particle monitor: field validation. *Journal of Environmental Monitoring*. 2007;9:1099-1106.
- Liu D, Zhang Q, Jiang J, Chen DR. Performance Calibration of Low-cost and Portable Particulate Matter (PM). *Journal of Aerosol Science*. 2017;112:1-10.
- Ly BT, Matsumi Y, Nakayama T, Sakamoto Y, Kajii Y, Nghiem TD. Characterizing PM_{2.5} in Hanoi with New High Temporal Resolution Sensor. *Aerosol and Air Quality Research*. 2019;18:2487-2497.
- Giang NTH, Oanh NTK. Roadside levels and traffic emission rates of PM_{2.5} and BTEX in Ho Chi Minh City, Vietnam. *Atmospheric Environment*. 2014;94:806-816.
- EPA. *Air Sensor Guidebook*; 2014.
- Sayahi T, Butterfield A, Kelly KE. Long-term field evaluation of the plantower PMS low-cost particulate matter sensors. *Environmental Pollution*. 2018;245:932-940.