

Appraising and developing ST-X field: determination of uncertainties by DST analysis

- **Vu Viet Hung**¹

- **Mai Cao Lan**²

¹Lam Son Joint Operating Company

²Department of Drilling and Production, Faculty of Geology and Petroleum Engineering- Ho Chi Minh city University of Technology, VNU-HCM

(Manuscript Received on July 05th, 2015; Manuscript Revised on September 30th, 2015)

ABSTRACT

A subsurface uncertainties is a possible future event, which, if occurs, would affect project objectives either negatively or positively. For any given model or event, the uncertainty is the range of variation of the component parts and possible outcomes. It could be quantified approximately by either analytical model or in a more cumbersome one such as numerical approach.

This paper summarizes the determination of uncertainties by DST analysis in appraising and developing the ST-X gas condensate field, which is offshore Vietnam in Block 15-10. Drill Stem Test (DST) results show that the S field has moderate to low permeability, multiple flow boundaries/barriers, and at least 2 PVT regions.

Key word: *uncertainty analysis, well test analysis, history matching, sensitivity analysis.*

To understand the impact of these and other important reservoir parameters on ultimate gas and condensate recovery and well count, the uncertainties has to be well evaluated and understood.

The study demonstrates that there is a wide range of possible ultimate gas and condensate recoveries and well counts. The top causes for this wide range are permeability and flow boundaries/barriers. In addition to the subsurface risks, drilling cost of a ST-X well is very high. The high well cost in combination with the field being offshore, having low permeability and possibly numerous reservoir compartments dramatically increase the risk of a full field development.

1. INTRODUCTION

The ST-X field is in the Cuu Long basin with approximately 155 km east of Vung Tau, 62 km offshore Vietnam, in 66 meters of water (Figure 1). Four wells have been drilled in the ST-X field to date (Figure 2).

The first wildcat well, Well-Alies in the South East corner of Block 15-10. Tests showed hydrocarbons flowing from three intervals in the Oligocene Clastics.

The second well (or the first appraisal well)

Well-Bwas drilled to evaluate the faulted and fractured basement reservoir, as well as, the Oligocene sandstones sequences.

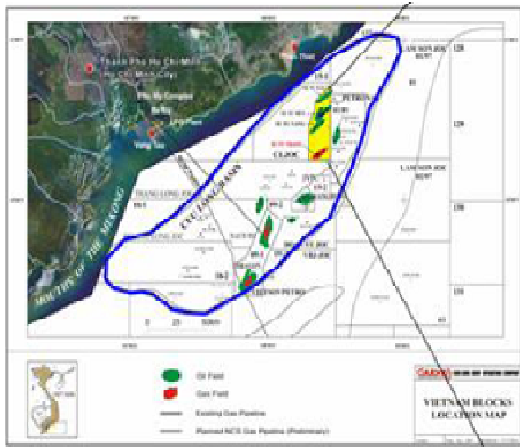


Figure 1. ST-X Location Map

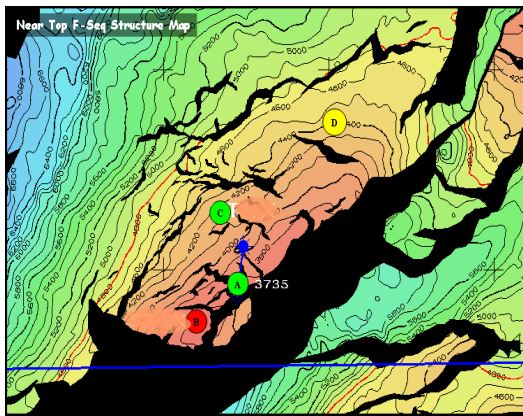


Figure 2. ST-X Wells Location

The second appraisal well, Well-C was drilled to evaluate the down flank extent of the sand sequences and an untested fault block.

The Well-D was drilled to test the Oligocene clastics on the northern flank of the ST-X structure.

2. LITERATURE REVIEW

Reservoir Uncertainties

Static reservoir properties are such as Net Sand, Sand Porosity and Oil Saturation. This includes the uncertainty in petrophysical

derivation of well-logs, plus the lateral distribution of the static reservoir properties across the reservoir (controlled by the depositional facies scenario). The major impact of Static Reservoir properties uncertainty is on STOIP and the reserve output. Permeability, cross plotting of the porosity and permeability data derived from core, well test, mini-DST, and MDT/RCI indicates scope for alternative regression lines to fitted through this data. Theoretically, two main categories of uncertainties that can potentially impact the value of the field development

- Static Uncertainties mainly impacting STOIP (from structural, depositional and fluid contact uncertainty)

- Dynamic Uncertainties impacting long term reservoir sweep and productivity. These categories of uncertainties combined describe a range of ultimate recoveries and production forecasts.

Drill Stem Testing (DST)

Well testing has progressed to become one of the most powerful tools for determining complex reservoir characteristics. It emphasizes the need for both a controlled downhole environment and high-performance gauges, which have made well testing a powerful reservoir description tool. Generally the Well Testing Interpretation results are:

- The reservoir production capacity (transmissibility)
- The well production capacity (well damage)
- The reservoir limits (reservoir porous volume)
- The reservoir specific behaviors

During a well test, a particular flow rate history is applied to a well, and the resulting pressure changes are recorded, either in the same well (typically) or in a nearby well interference test.

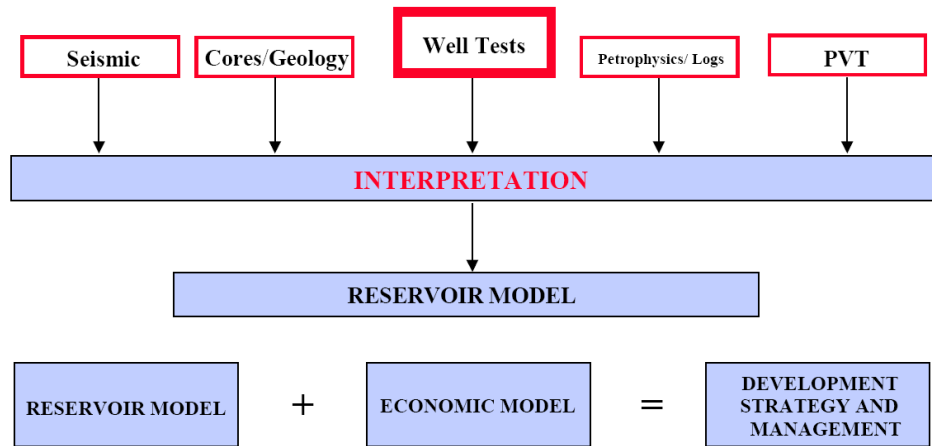


Figure 3. Well Testing is Indispensable part of Reservoir Description and Management

From the measured pressure response, and from predictions of how reservoir properties influence that response, an insight can be gained into those reservoirs properties. In order to make these predictions, it is necessary to develop mathematical models of the physical behavior taking place in the reservoir.

In view of modeling, good quality DST data promises bringing reliable dynamic modeling result. Condition is that the calibration approach shall be reasonable to capture the variation in reservoir property with no over or under its estimation potential. A systematic approach of using dynamic model to assess the variation of well test interpretation result to the range of output recovery factor as depicted in Figure 3.

Methodology

Analysis and evaluation of uncertain factors include three basic steps: identification of uncertain factors, determined domain of uncertain factors and screening uncertain factors. Within the scope of this study, step 1 in the process of defining the elements are unlikely to be present. In particular, the uncertainty factors are identified through interpretation of dynamic

data during testing. These factors include : K, Skin, Tran, Fluid, Boundary, Condensate blockage, Porosity, Fault, absolute permeability, rock compression ...

Based on the uncertainty factors have been identified , the suspect may affect the model simulation results. These uncertainties may be related to geological and technological factors as discussed above. These factors have been the strongest impact on model outputs. These factors are selected based on the characteristics of each reservoir, as well as on the experience of the engineer. The determination of value domain must be consulted by the experts of geology and reservoir engineering.

Besides, the methodology has been based upon reservoir simulation predictions using the available simulation models which have been calibrated to DST data. The reasonable case sensitivities have been performed through variation of various parameters including OIP changes, well counts and static & dynamic properties.

The work flow for dynamic modeling work is essential in the sense that it allows a systematic approach for any modeling work.

Two major groups in the process includes DST calibration such that the model will be tuned to testing data to a certain confident level, then the well placement steps ensure capturing potential productive areas, determine optimum number of well as well as its trajectory, perforation policy and so on. The last step in the process is to analyze and sort out the uncertainty factor in the Tornado chart prior to come up with a final recovery factors.

3. RESULTS AND DISCUSSION

Appraisal wells results

DST's were conducted on the Well-A(D, E and F Sand); Well-B(Basement); Well-C(E and F Sand) and Well-D(E sand)wells. Table 1 summarizes the flow properties determined from these tests for each well and sand sequence. In addition to the PVT data obtained from the DST's (Table 2), MDT data also provides an understanding of how the PVT properties may vary within the reservoir (Figure 4). They indicate that potentially three PVT regimes may exist in the field.

Table 1. Flow Properties Seen on DST's

	Well / DST	Perm	Pressure drop	Remark
Well-A	DST#2 F sequence	High	Small	Boundary effected
	DST#3 E sequence	High	Small	Boundary effected
Well-B	DST#2 Basement	Very Low		Pressure on trend with overlying F sand. Very low Perm
Well-C	DST#1 F sequence	Very Low	Large	Boundaries effected
	DST#2 E sequence	Very Low	Large	Condensate Blockage
Well-D	DST#2 E sequence	Very Low	Large	Boundaries effected

Table 2. PVT Data Obtained From Exploration / Appraisal Wells

Well	Formation	Fluid	Pb/Pd
Well-A	E	Gas	~4800
Well-B	Basement	Gas	~4200
Well-C	E	Gas	~7600
Well-C	F	Gas	~5000
Well-D	E	Liquid	~7100

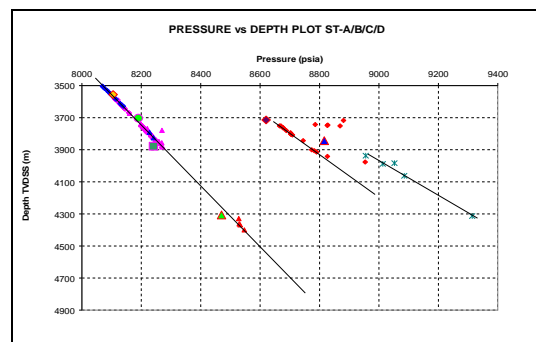


Figure 4. MDT Data Obtained From ST Exploration / Appraisal Wells

4. DETERMINATION OF UNCERTAINTIES BY DST ANALYSIS

Derivative analysis was performed on the initial build up, main flow period and main build up for all well of ST Field. For simplicity, only the gas rates and bottom hole pressure have been input into the analysis. Pressure analysis was performed using the following set of input data as below.

Gas volume factor : 0.00370 ft³/scf; Water Compressibility: 4.3466e-6

Thickness: 163 TVD ft; Porosity: 10%; Water Saturation: 10%; R_w: 0.177ft

Gas Compressibility: 4.6950e-5; Total Compressibility: 4.6799e-5

Formation Compressibility: 4.1093e-6; Gas viscosity : 0.0497 cp

An example showing the detail of DST analysis for DST#3 of well ST-C. The general overview of the pressure data recorded during DST#3 is shown in the Figure 5.

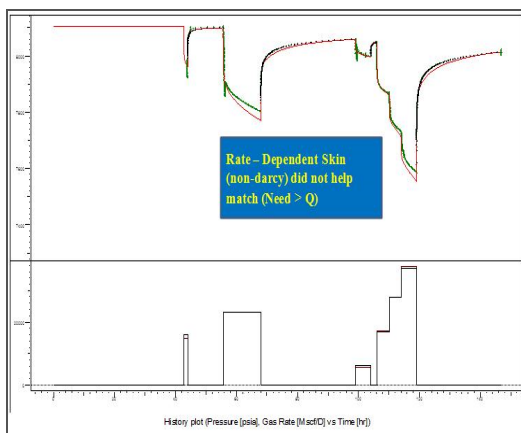


Figure 5. Gas Rate and Pressure for Analysis in DST#3

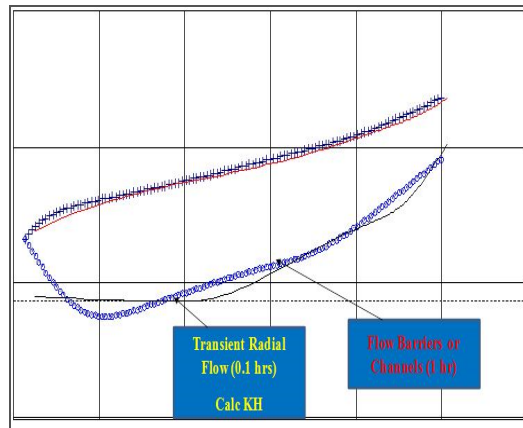


Figure 6. Log – Log Plot of the final build up (single layer)

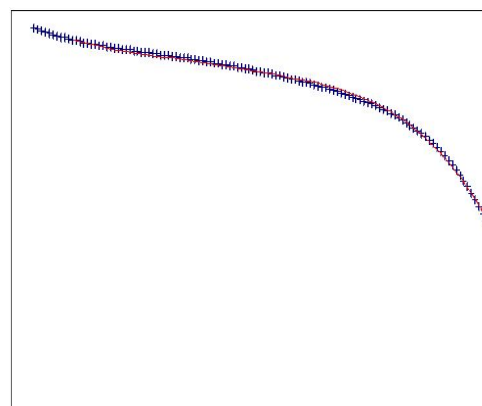


Figure 7. Semi– Log plot of the final build up (single layer)

Derivative analysis was performed on the main build up period. This derivative is shown in Figure 6 and 7: the log – log plot and semi – log plot of the final build up with single layer model. By matching this plot, derivative pressure curve of this DST indicates a radial flow period followed by a period that appears to be effected by boundaries. However, late time period of derivative curve still has been no good matching due to single layer is only sensitive with boundary close to the well.

This pressure behavior suggests that two boundaries were encountered. A good match to

the boundary effects can be obtained by change multi layer and boundary model (parallel faults).

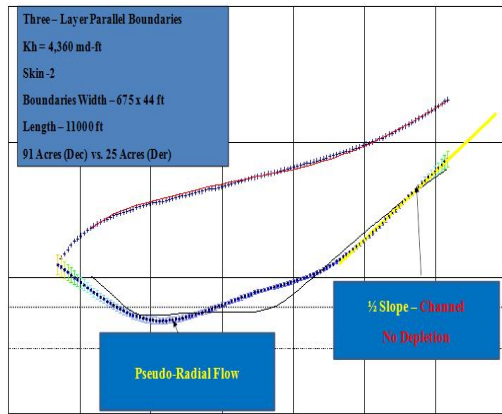


Figure 8. Log- Log plot of the final build up (three layer with parallel boundary)

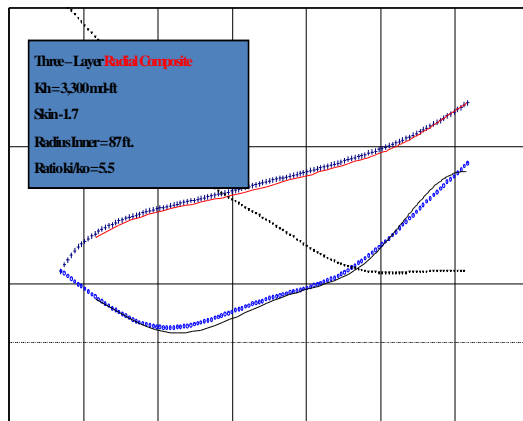


Figure 9. Log- Log plot of the final build up (three layer with radial composite)

The simplest solution that is able to achieve satisfactory matches on both the derivative and the full flowing period is shown above. This is a radial composite system with parallel faults at 675 feet and 44 feet from the well. Permeability

in the well is somewhat uncertain due to the uncertainty in picking radial flow. By matching this plot and attempting to match the full history an attempt at arriving at values for kh, Skin and Cs can be made.

5. CONCLUSIONS AND RECOMMENDATIONS

The results of this work show that there remains significant reservoir uncertainties in the ST-X field and the simulated recovery factor can vary greatly. The well count for the good reservoir permeability and connectivity scenario is much lower than for the case where the reservoir has poor permeability and connectivity. Additionally, during the exploration and appraisal phase of the ST-X field, it was found that the drilling cost of a ST-X wells are very high. The high drilling cost combined with the field being offshore and the reservoir having both low permeability and potentially large numbers of reservoir flow boundaries make a full field development a high risk endeavor.

For these reasons an Early Production System is recommended to reduce the development risk. In addition to generating revenue by selling the produced condensate and gas, the production data will improve the understanding of the field's permeability distribution and connectivity. The reservoir information obtained from the Early Production System will be vital input for further consideration of a full field development plan of ST-X Field.

Thẩm lượng và phát triển mỏ ST-X – Xác định thông số rủi ro và thách thức bằng phân tích thử vỉa

- **Vũ Việt Hưng**

Công ty điều hành chung Lam Sơn

- **Mai Cao Lân**

Bộ môn Khoan & Khai thác Dầu khí, Đại học Bách khoa, ĐHQG-HCM

TÓM TẮT

Mỏ khí ngưng tụ ST-X là một trong các mỏ dầu khí lớn nằm trong lô 15-10 ngoài khơi Việt Nam. Đánh giá trữ lượng dầu khí tại chỗ cho thấy đủ khả năng đưa mỏ và phát triển. Kết quả thử vỉa chỉ ra mỏ ST-X có độ thấm trung bình thấp, bất đồng nhất, cao. Các giếng khoan mỏ ST-X không những có rủi ro về địa chất mà còn điều kiện ngoài khơi đã làm tăng tính rủi ro cho phát triển mỏ. Vấn đề lớn đặt ra là làm sao phát triển mỏ này với khả năng thu hồi cao nhất mà chi phí đầu tư thấp nhất.

Bài báo tóm lược kết quả đánh giá về việc nhận diện và xác định những yếu tố không chắc chắn thông qua minh giải số liệu thử vỉa. Qua đó sẽ đánh giá ảnh hưởng của các yếu tố rủi ro lên hệ số thu hồi dầu - khí. Kết quả sẽ giúp đưa ra phương hướng phát triển mỏ khí ngưng tụ với cực tiểu rủi ro và cực đại thu hồi dầu khí.

Số liệu thử vỉa của các giếng thăm dò đã chỉ ra nhiều yếu tố không chắc chắn: độ thấm thấp, nhiều biên không thấm, vùng khóa bởi khí ngưng tụ và vỉa có ít nhất 2 vùng đặc tính lưu

chất...Dựa trên các dữ liệu có giá trị, có nhiều câu hỏi cần phải được trả lời trước khi đưa mỏ vào phát triển.

1. Mức độ không chắc chắn như thế nào với các thông số vỉa
2. Làm thế nào để xác định các yếu tố không chắc chắn
3. Yếu tố nào là không chắc chắn cao nhất
4. Ảnh hưởng của các yếu tố không chắc chắn này đến số lượng giếng và thu hồi khí, dầu ngưng tụ
5. Khoảng giá trị có thể có của thu hồi khí, dầu ngưng tụ và số lượng giếng
6. Phương án nào phát triển mỏ tốt nhất

Trong phạm vi nghiên cứu sẽ trả lời các câu hỏi về xác định các yếu tố không chắc chắn và thông số nào ảnh hưởng cao nhất lên khả năng thu hồi khí, dầu ngưng tụ và số lượng giếng. Từ đó đề ra phương hướng phát triển mỏ tối ưu.

Từ khóa: phân tích tính bất định, phân tích thử giếng, phân tích ảnh hưởng, lịch sử khai thác.

REFERENCES

- [1]. Robert c. Earlougher. "Advanced Well Test Analyses. Texas": Society of Petroleum Engineer, 1977.
- [2]. Virine, L. and Rapley L.: "Decision and Risk Analysis Tools for the Oil and Gas Industry," paper SPE 84821 presented at the SPE Eastern Regional/AAPG Eastern Section Joint Meeting, Pittsburgh, Pennsylvania, U.S.A, Sept.6-10, 2003.
- [3]. Ostebo, R.; Tronstad, L.; and Fikse, T.: "Risk Analysis of Drilling and Well Operations", Paper SPE/IADC 21952, Presented at the 1991 SPE/IADC Drilling Conference, Amsterdam, Holland, 11-14 March, 1991.
- [4]. Coats, K.H.: "Reservoir Simulation: State of the Art," JPT (Aug. 1982) 1633-42; *Trans.*, AIME, 273.
- [5]. Collins, R.E.: *Flow of Fluids Through Porous Materials*, Petroleum Publishing Co., Tulsa (1976) 254.
- [6]. Kazemi, H., Vestal. C.R., and Shank, G.D.: "AN Efficient Multi component Numerical Simulator," SPEJ (Oct. 1978) 355-68.
- [7]. Taylor, A.J.: "Computer Simulation of Condensate Reservoirs," paper presented at the 1983 OYEZ Science and Technology Services Ltd. North Sea Condensate Reservoirs and Their Development Conference, London, May 24-25.
- [8]. Coats, K.H.: "Simulation of Gas Condensate Reservoir Performance," JPT (Oct. 1985) 1870-86; *Trans.*, AIME, 279.
- [9]. Todd, M.R. and Longstaff, W.J.: "The Development, Testing, and Application of a Numerical Simulator for Predicting Miscible Flood Performance," JPT (July 1972) 874-82; *Trans.*, AIME, 253.
- [10]. Chu, C. and Trimble, A.E.: "Numerical Simulation of Steam Displacement – Field Performance Applications," JPT (June 1975)765-76.
- [11]. Veatch, R.W. Jr. and Thomas, G.W.: "A Direct Approach for History Matching," paper SPE 3515 presented at the 1970 SPE Annual Meeting, New Orleans, Oct. 3-6.
- [12]. Jacquard, P. and Jain, A.: "Permeability Distribution from Field Pressure Data," SPEJ (Dec. 1956) 281-94; *Trans.*, AIME, 234.
- [13]. Slater, G.E. and Durrer, E.J.: "Adjustment of Reservoir Simulation Models to Match Field Performance," SPEJ (Sept. 1971) 295-305; *Trans.*, AIME, 251.
- [14]. Bishop, K.A., *et al.*: "The Application of Sensitivity Analysis to Reservoir Simulation," paper SPE 6102 presented at the 1976 SPE Annual Technical Conference and Exhibition, New Orleans, Oct. 3-6.
- [15]. Breit, V.S. *et al.*: "A Technique for Assessing and Improving the Quality of Reservoir Parameter Estimates Used in Numerical Simulators," paper SPE 4546 presented at the 1673 SPE Annual Meeting, Las Vegas, Sept. 30-Oct.3